

Performing a Firmware Upgrade Evolution Camera

ATTENTION: EVO-12 CAMERAS WITH ORIGINAL v1.0.45 FIRMWARE MUST FIRST BE UPGRADED TO v1.1.49 BEFORE UPGRADING TO LATER VERSIONS

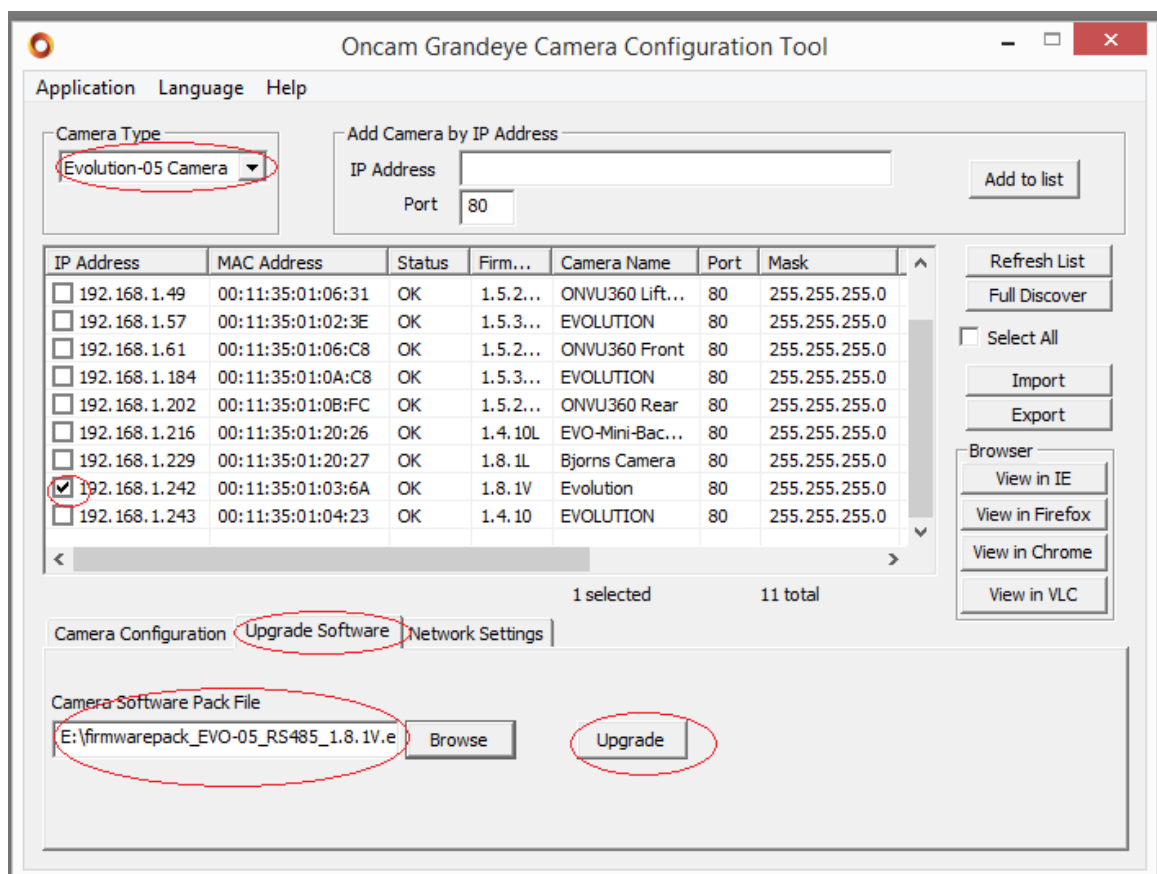
Firmware v1.1.49 is included in the v2.2-855 download package to facilitate this essential initial upgrade.

Failure to upgrade v1.0.45 to v1.1.49 first may make the camera unresponsive and require RMA.

Upgrading the firmware on your Evolution camera is done using the configuration tool. If you don't already have this installed you can download the configuration tool from [here](#)

You can download the latest firmware from [here](#), if you have not already done so.

1. Double click on the configuration tool icon on your desktop to open it up. This should display a list of all Oncam Grandeye available cameras on that specific network (assuming all cameras are on the same network)



Note: Make sure the *camera type* is set to the cameras you are trying to find on your network. Camera type can be changed using the drop down button.

2. Locate the camera you want to perform an upgrade on using the camera MAC address as a guide. Check-off / tick the box next to the camera
3. Clicking on the ***upgrade software*** tab will give you an option to browse and upload the latest firmware you want to upgrade to (this should already be save to either your PC or removable drive).
4. Click on ***upgrade***, and this will now upgrade your camera. You will be prompted to save your current configuration settings, this is entirely optional. When the upgrade is complete you will get a confirmation of either a ***SUCCESS OR FAILURE***. Wait for about 2 - 3 minutes for your camera to fully reboot.
5. Click on the ***Refresh List*** Tab to refresh the configuration tool to confirm camera is back online and make sure camera ***status is OK*** to view camera