

# Evolution Stainless Steel Camera

## QUICK START GUIDE

### PENDANT MOUNT



EVO-05-PSK  
EVO-12-PSK



## Welcome

The Oncam Evolution 05 & 12 Stainless Steel 360° cameras are designed for industrial environments and for connecting to IP networks. Configure and operate the cameras using a standard internet browser.

Described is the installation and configuration procedures for a standard pendant mount camera application.

<b>Power Input</b>	12 VDC, 1.0 A (min) LPS, NEC Class 2 power supply or Power over Ethernet (PoE), IEEE standard 802.3af			
<b>Operating Temperature</b>	-40 to +55°C (-40 to +131°F)			
<b>Enclosure</b>	Electropolished marine grade 316 stainless steel with polymer bubble			
<b>Weight</b>	<b>EVO-05</b>	6.30 kg (13.89 lbs)	<b>EVO-12</b>	6.34 kg (13.97 lbs)

## Supplied Parts

- EVO-05 or EVO-12 Camera
- Pendant Mount Adapter
- Sunshield
- Pipe Thread Adapter
- NSF Kit
- Hex Screwdriver
- Spanner
- Drilling Template
- Quick Start Guide

## Technical Support

For the A&E, Specification, Installation and User Manual, Software and Firmware visit:

<https://www.oncamgrandeye.com/resources/product-downloads/>

**Tel:** UK +44 (0)20 7371 6640  
US +1 978 735 4860

**Email:** [support@oncamgrandeye.com](mailto:support@oncamgrandeye.com)

## MAC address

Document the camera's installation location and unique MAC address. Find the MAC address printed on the camera label. This information may be needed during the camera configuration.



## Installation & Mounting

Use compatible wall, pole and pendant mount brackets with the Evolution Stainless Steel Pendant Mount camera.

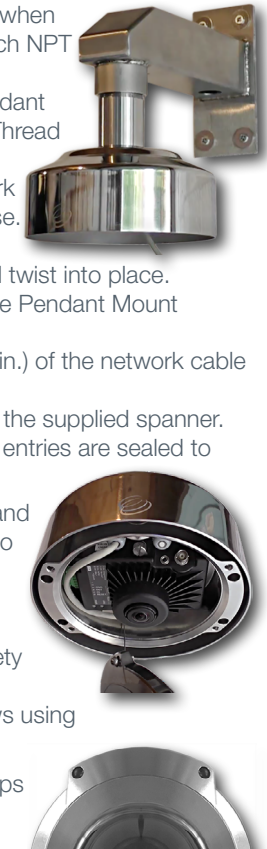
### Preparation

1. Remove the four dome cover screws using the Hex Screwdriver.
2. Carefully remove the dome cover.
3. Detach the dome cover from the safety wire and remove the camera module.
4. Remove the three Pendant Mount screws and washers.
5. Aligning the holes, secure the Sunshield to the Pendant Mount Adapter using the three screws and washers.



### Installation

1. Use the Pipe Thread Adapter when connecting to a female 1.5-inch NPT connection.
2. Attach the Sunshield and Pendant Mount assembly to the Pipe Thread Adapter or mounting bracket.
3. Pass the unterminated network cable through the camera base.
4. Align the camera base to the Pendant Mount assembly and twist into place.
5. Secure the camera base to the Pendant Mount assembly.
6. Pull approximately 25 cm (10 in.) of the network cable through the cable gland.
7. Tighten the cable gland using the supplied spanner.
- CAUTION:** Ensure all cable entries are sealed to maintain the IP69K rating.
8. Terminate the network cable and secure the camera module into the camera base.
9. Connect the network cable to the camera.
10. Reattach the dome cover safety wire.
11. Secure the dome cover screws using the Hex Screwdriver.



**Notice:** Use the provided screw caps after fitting the dome cover for NSF rating and compliance.

## Important

- Read these instructions carefully before installing or operating this camera.
- This camera should be installed by a qualified service person and the installation should conform to local and national regulations.
- Maintain the IP69K rating by ensuring all cable entries are sealed.
- Certified as FCC Class A. In a domestic environment this camera may cause radio interference in which case the user should take adequate measures.



**DANGER: RISK OF EXPLOSION IF REPLACING A BATTERY WITH AN INCORRECT BATTERY TYPE.**

## Configuring Network Settings

### Powering the Camera

Supply power to the camera with 12 VDC or PoE IEEE802.3af through the integrated RJ45 Ethernet cable.

### IP Settings

In order to use the camera you need the IP address.

There are two IP Settings.

- DHCP server or router to automatically assign unique valid IP addresses to each camera.
- A manually configured network using static IP addresses.

If your network has a DHCP server, go to First Time Camera Access.

Should a DHCP server not be available, the camera adopts the default static IP address 192.168.0.200. You will then need to manually assign each camera with a new unique IP address.

Note: See the camera's User Manual and Camera Configuration Tool User Manual for IP Setting adjustments.

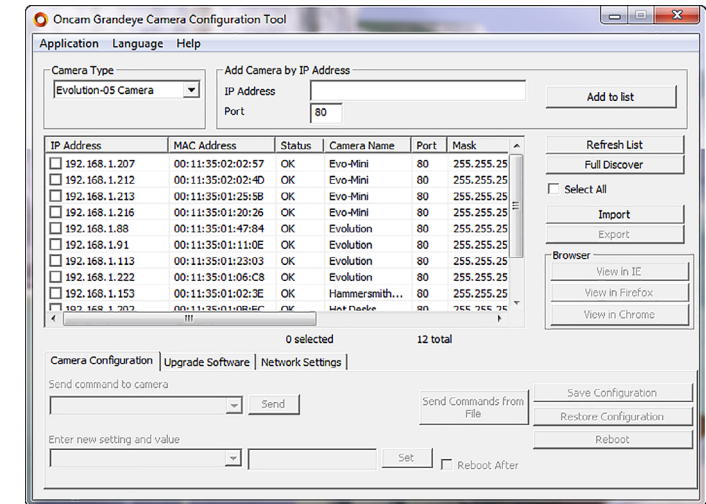
## Using the Camera Configuration Tool

Go to the Oncam website (<https://www.oncamgrandeye.com/resources/camera-config-tool/>) to download the latest version of the Camera Configuration tool and corresponding User Manual.

The Camera Configuration tool quickly finds the IP and MAC addresses of all Oncam Evolution cameras connected to the network. It also allows you to change network settings, configure the system and perform software updates on multiple cameras. Initiate a new scan by clicking the Full Discover button.

Start the application by clicking the CameraConfigurationTool icon found on your desktop or from the program list (under Oncam Grandeye). The software scans the network and provides a list of all connected Oncam Evolution cameras.

Note: Some functions in this tool require a username and password. If accessing the camera for the first time, an administrator username and password will need to be set.



**Note:** Shown is the Evolution 05 screen.

## First Time Camera Access

### Web Browser

1. If you know the IP address of the camera, enter this into the address bar of your web browser (Internet Explorer, Edge, Firefox or Chrome). The camera should be on the same network.
2. Create an Admin username and password.

### Notes:

Internet Explorer 11 is required to view live camera images in the browser. All other browsers can be used for configuration purposes only.

Ensure you have the latest [VLC Media Player](http://www.videolan.org/vlc/index.html) (<http://www.videolan.org/vlc/index.html>) for viewing camera images on the web interface.

### Camera Configuration Tool

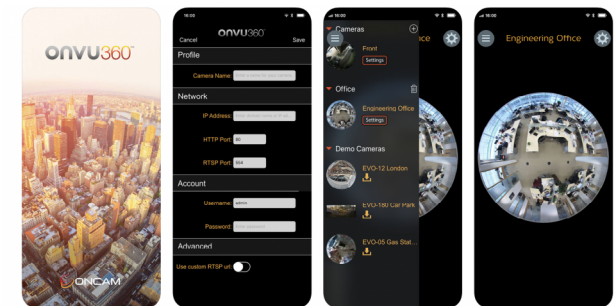
1. Select a camera from the camera list
2. Select your browser to open the web interface.
3. Click OK on the authentication pop up. You will then be prompted to create and set an Admin username and password to access the camera.



**Note:** Shown is the Evolution 12 camera.

Download our FREE ONVU360 Pro mobile application and put the 360-degree experience right at your fingertips.

Scan the QR Code to get it now!



Android

iOS

