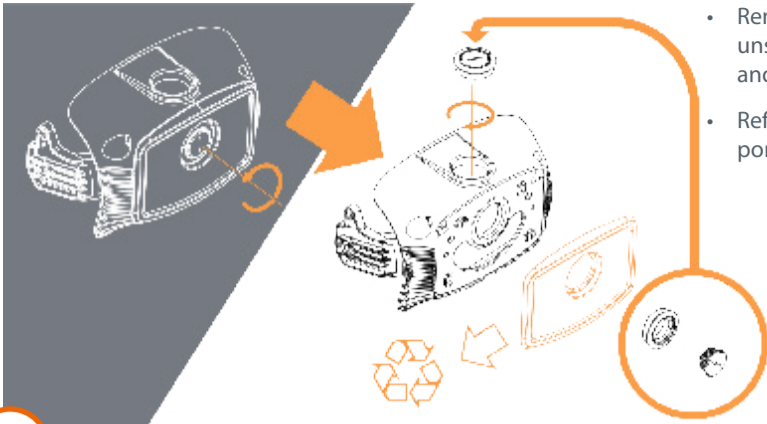
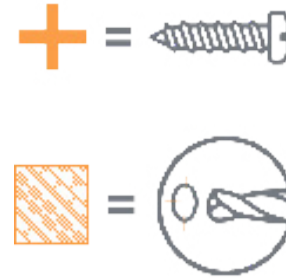


## Option A. Surface Mounting



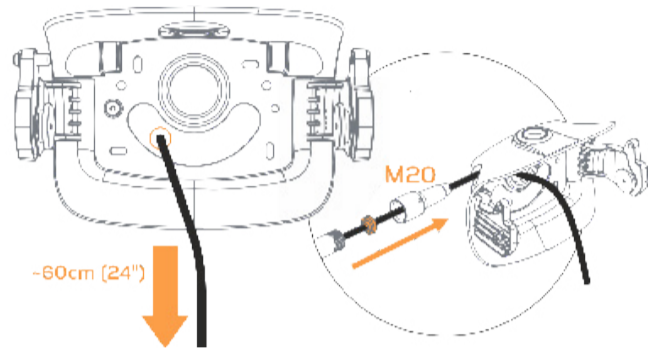
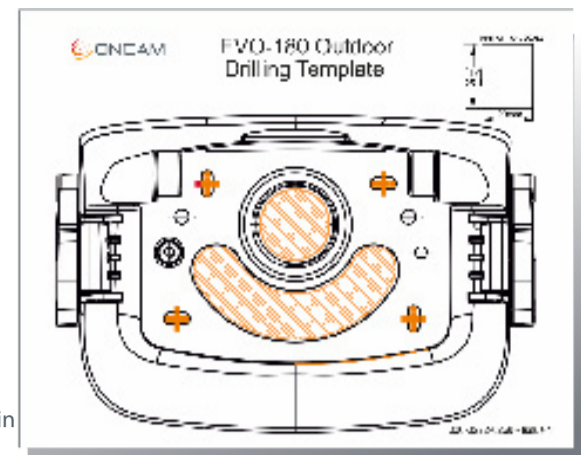
- Remove the back cover by unscrewing the M20 plug and M32 to M20 adapter.
- Refit them into the unused port on the top.

### 1.1 Prepare the bracket for surface mounting



- Drill mounting holes.
- Drill hole for cable entry within the shaded areas.

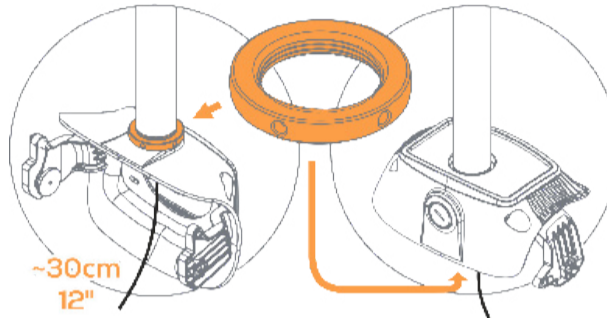
### 1.2 Drill holes



- Route an unterminated network cable through the bracket. Leave a minimum of 60cm of cable protruding.
- M12 Conduit ports are available for side cable entry via the M12 to M20 adapter (J).

### 1.3 Route a cable through bracket

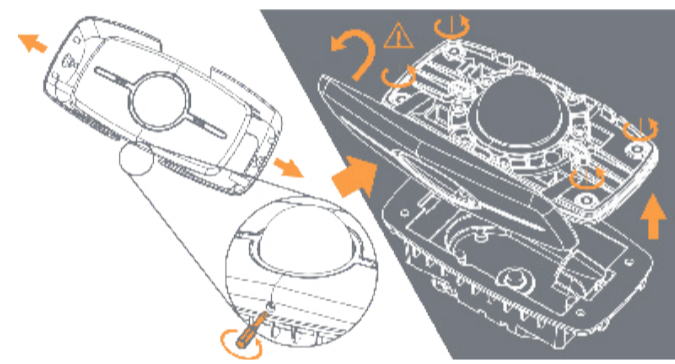
## Option B. Pendant Mounting



- Route an unterminated network cable through the pendant mount hole.
- Screw the mount assembly onto the pendant and lock with the locking nut (K).
- Leave a minimum of 30cm of ethernet cable protruding.

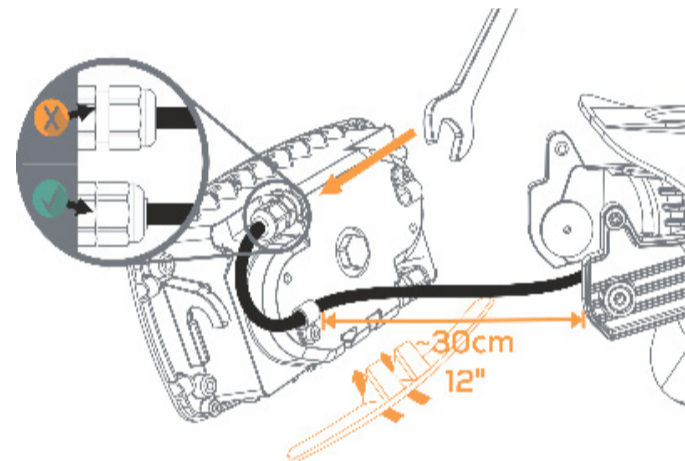
### 1.4 Mount bracket on pendant

## Completing the Installation



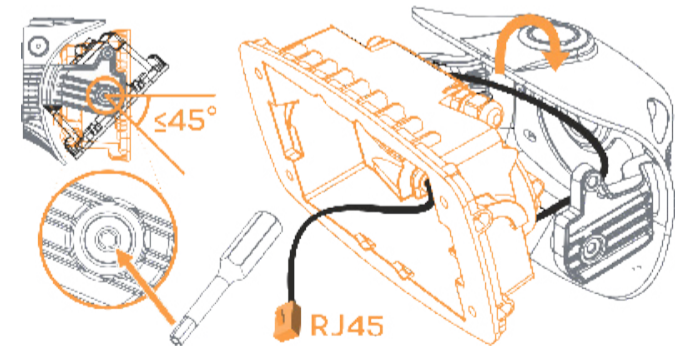
- Remove the sun shields.
- Undo the locking screw (turning it anti-clockwise).
- Remove the front cover but leave the protective film on the dome.
- Unscrew the 4 security screws.

### 2.1 Remove the rear enclosure



- Pass the network cable through the P-clip and cable gland.
- Pull 30cm of cable through and then tighten the nut fully as shown.
- Insert "Infil" (P) only if the camera is to be set horizontal. If the camera is to be tilted, the infil is not necessary.

### 2.2 Route cable into rear enclosure



- Loosen the pivot screws from the outside.
- Hook the rear enclosure on the mounting bracket.
- Pull the rear enclosure down fully.
- Terminate the cable with a RJ45.
- Aim the rear enclosure at the required angle for the camera
- If camera is tilted, remove infil (P).
- Tighten the pivot screws and then the locking grub screws.

### 2.3 Hook in rear enclosure and set mount angle

- Insert the SD card into the camera module (optional).
- Plug the RJ45 into the camera module.
- Tighten up 4 security screws that fix the camera module to the rear enclosure.
- Take off the protective plastic film off the dome.
- With care, replace the front cover and tighten up the locking screw.
- Replace the sun shields.
- Both camera LEDs should be green when the camera is booted with an ethernet connection.

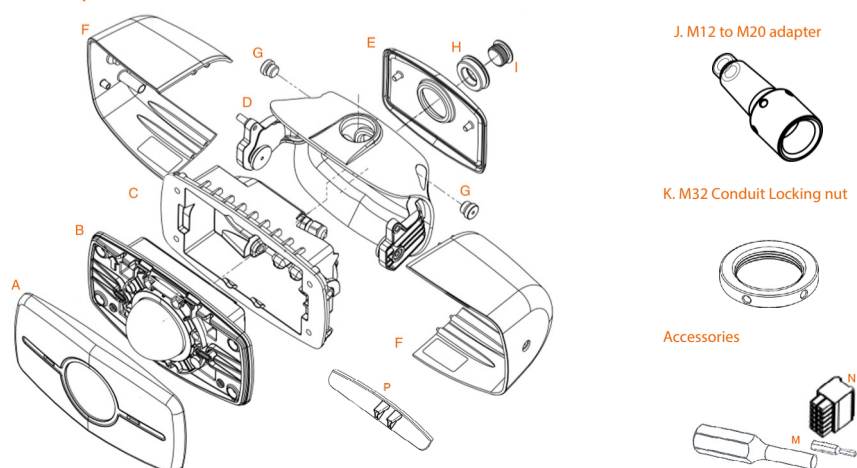
*Note:*

*For 12V power supply installation, please refer to the User manual for more information.*

### 2.4 Connect and fix camera module in enclosure

## Package Contents

Camera components



## Supplied Parts

- A. Front Cover
- B. EVO-180 Camera module
- C. Rear Enclosure
- D. Mounting Bracket
- E. Back cover
- F. Sun-shields x 2
- G. Side Conduit plug x 2 (fitted)
- H. M32 - M20 Adapter (fitted)
- I. M20 Conduit Port plug (fitted)
- J. M12 - M20 Adapter
- K. M32 Conduit Locking Nut
- L. Drilling template
- M. Screwdriver and security bit
- N. 12 pin I/O 12V Connector
- O. Quick Start Guide
- P. Infil black cover (fitted)
- Q. Reverse mount screws

The Evolution 180 Outdoor camera is designed for installation on flat surfaces or pendants. The camera is supplied with a mount bracket that is used to fix the camera to a surface or a pendant.

*Note:*

*You will need 4 appropriate fixing screws for surface mounting.*



EVO-180-WED-03 | Outdoor QSG | 04/2022 | Rev 1.4

Copyright 2022 by ONVU Technologies AG. All rights reserved. Oncam is a trading name of ONVU Technologies AG. Subject to change without notice. All screen images are simulated. Specifications and configurations subject to change without notice. Legal Notice: Parts of this product are protected by patents.

# Evolution 180 Outdoor Camera QUICK START GUIDE



EVO-180-WED



## Specification

Power Input	Power over Ethernet (PoE), IEEE standard 802.3af or 12 VDC, 1.0 A (min) LPS, NEC Class 2 power supply
IP Rating	IP66, IP67, IP68 (2m 30min), IP69K, IK10+
Operating Temperature (°C / °F)	-40°C to 55°C (-40 °F to +131°F)
Enclosure	Aluminium and Polymer
Weight	2.6 kg (5.73 lbs)

## Important

Read these instructions carefully before installing or operating this camera. This camera should be installed by a qualified service person and the installation should conform to local and national regulations. This camera is not suitable for installation in a ceiling void that is used as an air handling space. Certified as FCC Class A. In a domestic environment this camera may cause radio interference in which case the user should take adequate measures.



**DANGER: RISK OF EXPLOSION IF REPLACING A BATTERY WITH AN INCORRECT BATTERY TYPE.**

## Startup

### Powering the Camera

Supply power to the camera with PoE IEEE802.3af through the integrated RJ45 Ethernet port or using the 12V DC input pins on the I/O connector. Do not use both power sources at the same time. Both camera LEDs will be green when the camera is booted with an ethernet connection.

### IP Settings

In order to use the camera you need the IP address.

There are two IP Settings.

- DHCP server or router to automatically assign unique valid IP addresses to each camera
- A manually configured network using static IP addresses.

If your network has a DHCP server, go to First Time Camera Access. Should a DHCP server not be available, the camera adopts the default static IP address **192.168.0.200**.

You will then need to manually assign each camera with a new unique IP address using the camera configuration tool.

**Note:** See the camera's User Manual and Camera Configuration Tool User Manual for IP Setting.

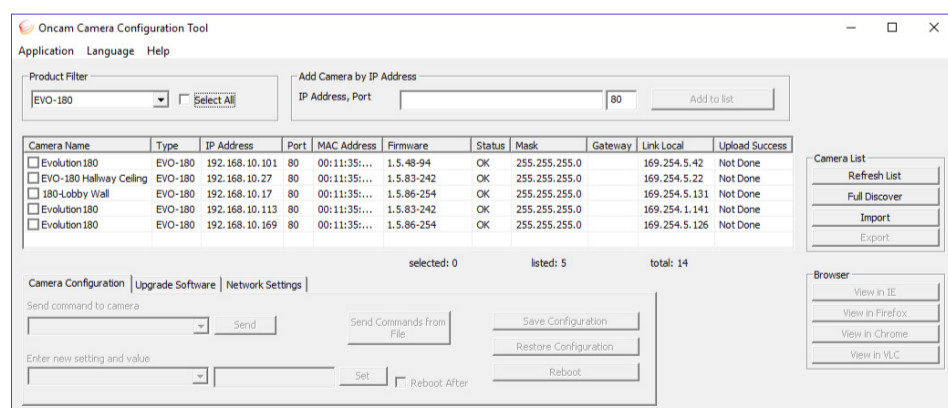
## Using the Camera Configuration Tool

Go to the Oncam website (<https://www.oncamgrandeye.com/resources/camera-config-tool/>) to download the latest version of the Camera Configuration tool and corresponding User Manual.

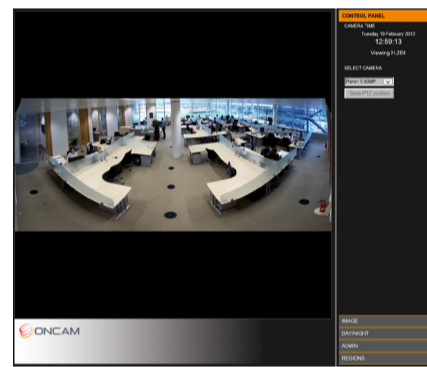
The Camera Configuration tool quickly finds the IP and MAC addresses of all Oncam Evolution cameras connected to the network. It also allows you to change network settings, configure the system and perform software updates on multiple cameras. Initiate a new scan by clicking the Full Discover button

Start the application by clicking the CameraConfigurationTool icon found on your desktop or from the program list (under Oncam Grandeye). The software scans the network and provides a list of all connected Oncam Evolution cameras.

**Note:** Some functions in this tool require a username and password. If accessing the camera for the first time, an administrator username and password will need to be set.



## First Time Camera Access



### Web Browser

1. If you know the IP address of the camera, enter this into the address bar of your web browser (Internet Explorer, Edge, Firefox or Chrome). The camera should be on the same network.
2. Create an Admin username and password.

### Camera Configuration Tool

1. Select a camera from the camera list
2. Select your browser to open the web interface.
3. Click OK on the authentication pop up. You will then be prompted to create and set an Admin username and password to access the camera

**Note:**

Internet Explorer 11 is required to view live camera images in the browser. All other browsers can be used for Configuration Purposes only.

Ensure you have the latest VLC Media Player (<http://www.videolan.org/vlc/index.html>) for viewing camera images on the web interface.

## Next Steps

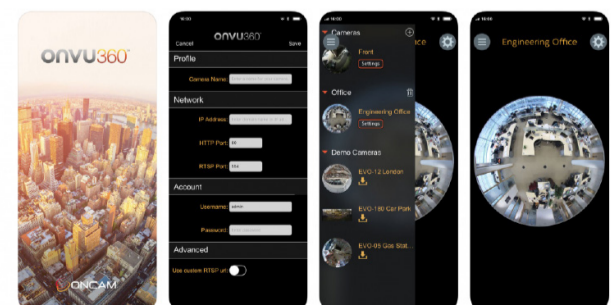
The camera's web GUI has sophisticated adjustments in the IMAGE tab, for different mounting angles and scenes.

If the camera itself is tilted, set the wall mount angle corresponding to the tilt (e.g. -25°, -45°) to make vertical lines in the scene parallel.

Scene offset angle allows the panoramic view to be adjusted up or down to precisely capture the desired scene.

**Download our FREE ONVU360 Pro mobile application and put the 360-degree experience right at your fingertips.**

Scan the QR Code to get it now!



**Android**

**iOS**



## Technical Support

For the Datasheet, A&E Specification, Installation and User Manual, Software and Firmware visit:

<https://www.oncamgrandeye.com/product-downloads/>

**Tel:** UK +44 20 7371 6640  
US +1 978 735 4860

**Email:** [support@oncamgrandeye.com](mailto:support@oncamgrandeye.com)

## MAC Address

Make a note of the camera's MAC address and installation location. Find the MAC address printed on the camera label. This information may be needed during the camera configuration.

