

# Evolution 12 Indoor Camera

## QUICK START GUIDE



EVO-12-NID



### Welcome

The Oncam Evolution 12 Indoor 360° camera is designed to be connected to an IP network. Configure and operate the camera using a standard internet browser.

Described are the installation and configuration procedures for a standard surface mount camera application.

Power Input	12 VDC, 1.0 A (min) LPS, NEC Class 2 power supply or Power over Ethernet (PoE), IEEE standard 802.3af
Operating Temperature	0 to +40°C (-32 to +104°F)
Enclosure	Polymer
Weight	0.72 kg (1.59 lbs)

### Supplied Parts

- EVO-12 Camera
- Surface Mounting Plate
- Trim Cover
- Quick Start Guide
- Drilling Template

### Technical Support

For the A&E, Specification, Installation and User Manual, Software and Firmware visit:

[www.oncamgrandeye.com/resources/product-downloads/](http://www.oncamgrandeye.com/resources/product-downloads/)

**Tel:** UK +44 (0)20 7371 6640

US +1 978 735 4860

**Email:** [support@oncamgrandeye.com](mailto:support@oncamgrandeye.com)

### MAC Address

Document the camera's installation location and unique MAC address. Find the MAC address printed on the camera label. This information may be needed during the camera configuration.



### Installation & Mounting

The Evolution Indoor camera is intended for surface and pendant mount applications. Route cables in the enclosure from either the back or side.

Using the optional Pendant Mount, attach the camera directly to any length of pipe (1 1/2-inch NPT diameter).

#### Preparation

1. Using the Torx driver (provided), unscrew the side Torx screw then carefully unclip the plastic trim cover.
2. Carefully remove the dome cover removing the camera module.

#### Installation

1. Using the drilling template, drill mounting holes.
2. Pull wires through the center hole.
3. Attach the Mounting Plate with appropriate fasteners.

NOTICE: Ensure the fasteners are appropriate for the surface material and support at least four times the weight of the camera and assembled enclosure.

4. Secure the Mounting Plate to the surface.

Note: Considering the orientation of the fisheye image, consider the thumbscrew equal to the fisheye image top.

5. Connect the Ethernet cable and wiring. Remove the alarm connector (if used) to facilitate connection.
6. Install the Camera Module by rotating the camera into the clip in the Mounting Plate.



7. Fasten the Camera module with the thumb screw.

8. Attach the Trim Cover over the Mounting Plate by aligning the two section guides. Ensure wires travel around the lens.



9. Install the Torx screw.
10. Apply power.
11. Remove the protection film from the camera lens.

### Important

- Read these instructions carefully before installing or operating this camera.
- This camera should be installed by a qualified service person and the installation should conform to local and national regulations.
- This camera is not suitable for installation in a ceiling void that is used as an air handling space.
- Certified as FCC Class A. In a domestic environment this camera may cause radio interference in which case the user should take adequate measures.



**DANGER: RISK OF EXPLOSION IF REPLACING A BATTERY WITH AN INCORRECT BATTERY TYPE.**

## Configuring Network Settings

### Powering the Camera

Supply power to the camera with PoE IEEE802.3af through the integrated RJ45 Ethernet cable.

### IP Settings

In order to use the camera you need the IP address.

There are two IP Settings.

- DHCP server or router to automatically assign unique valid IP addresses to each camera.
- A manually configured network using static IP addresses.

If your network has a DHCP server, go to First Time Camera Access.

Should a DHCP server not be available, the camera adopts the default static IP address 192.168.0.200. You will then need to manually assign each camera with a new unique IP address.

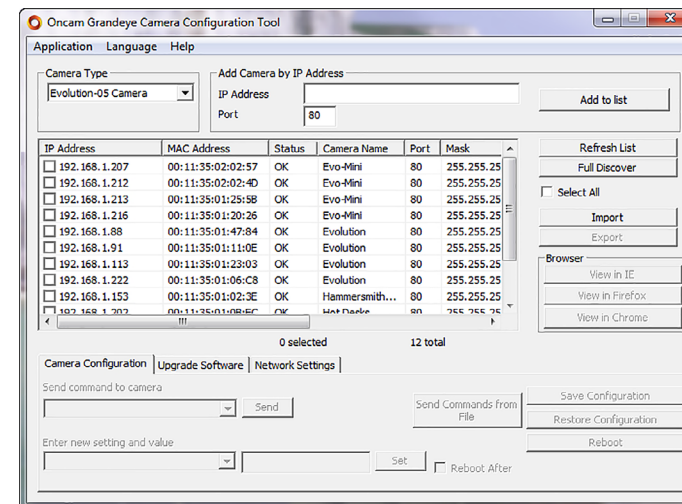
Note: See the camera's User Manual and Camera Configuration Tool User Manual for IP Setting adjustments.

## Using the Camera Configuration Tool

Go to the Onecam website (<https://www.oncamgrandeye.com/resources/camera-config-tool/>) to download the latest version of the Camera Configuration tool and corresponding User Manual.

The Camera Configuration tool quickly finds the IP and MAC addresses of all Onecam Evolution cameras connected to the network. It also allows you to change network settings, configure the system and perform software updates on multiple cameras. Initiate a new scan by clicking the Full Discover button. Start the application by clicking the CameraConfigurationTool icon found on your desktop or from the program list (under Onecam Grandeye). The software scans the network and provides a list of all connected Onecam Evolution cameras.

Note: Some functions in this tool require a username and password. If accessing the camera for the first time, an administrator username and password will need to be set.



Note: The Evolution 05 screen is shown, the Evolution 12 is identical.

## First Time Camera Access

### Web Browser

1. If you know the IP address of the camera, enter this into the address bar of your web browser (Internet Explorer, Edge, Firefox or Chrome). The camera should be on the same network.
2. Create an Admin username and password.

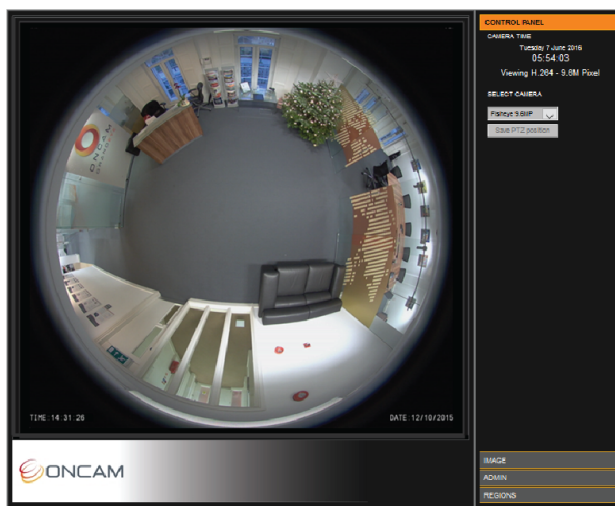
### Notes:

Internet Explorer 11 is required to view live camera images in the browser. All other browsers can be used for configuration purposes only.

Ensure you have the latest [VLC Media Player \(http://www.videolan.org/vlc/index.html\)](http://www.videolan.org/vlc/index.html) for viewing camera images on the web interface.

### Camera Configuration Tool

1. Select a camera from the camera list
2. Select your browser to open the web interface.
3. Click OK on the authentication pop up. You will then be prompted to create and set an Admin username and password to access the camera.

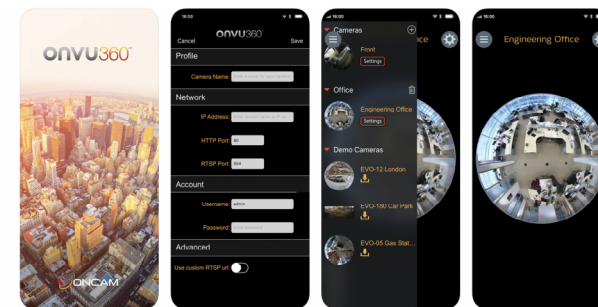


EVO-12-N#D-01 | Indoor | 11.2020 | Rev G

© Copyright 2020 ONVU Technologies AG. All rights reserved. Onecam is a trading name of ONVU Technologies AG. Specifications and configurations subject to change without notice.

Download our FREE ONVU360 Pro mobile application and put the 360-degree experience right at your fingertips.

Scan the QR Code to get it now!



Android



iOS

