

# Evolution 12 Concealed Camera

## QUICK START GUIDE



EVO-12-NCD

Black and White  
Bezel Included



### Welcome

The Oncam Evolution 12 Indoor Concealed 360° camera is designed to be connected to an IP network. Configure and operate the camera using a standard internet browser.

Described are the installation and configuration procedures for a standard surface mount camera application.

Power Input	12 VDC, 1.0 A (min) LPS, NEC Class 2 power supply or Power over Ethernet (PoE), IEEE standard 802.3af
Operating Temp.	0 to +40°C (-32 to +104°F)
Enclosure	Polymer
Weight	0.53 kg (1.17 lbs)

### Supplied Parts

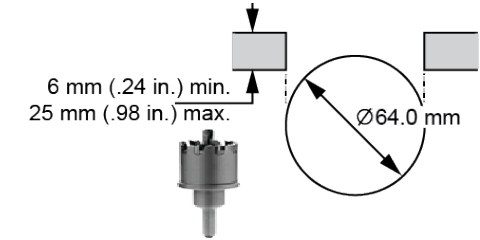
- EVO-12 Camera
- Bezel
- Locking Nut
- Quick Start Guide

### Installation & Mounting

The Evolution Indoor Concealed camera is intended for mounting in suspended ceilings with removable ceiling panels with a material thickness of between 6 mm (1/4-inch) to 25 mm (1-inch) thick. Ensure the camera has sufficient clearance when installed.

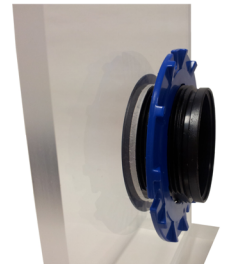
#### Preparation

Remove the ceiling panel and cut a hole to accept the 64 mm (2.52-inch) Bezel.



#### Installation

1. Insert the Bezel through the hole from the front of the cut out (Lens side). Fit the blue Locking Nut to the rear securing the Bezel in place.
2. Ensure the Locking Nut is orientated so the smooth side is against the surface of the ceiling material.

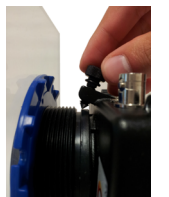


NOTICE: Do not over tighten the Locking Nut.

3. Insert the Camera Module into the Bezel from above. Slide the Camera Module into the rear of the Bezel.

Note: Ensure the camera is correctly oriented and the top of the image corresponds to the orientation of the camera.

4. Tighten the thumb screw to fix the camera in the desired position.
5. Pass the Ethernet cable around the Camera Module; secure the cable by clicking the connector into position.
6. Route wires to the connection points. Remove the alarm connector from the camera (if used) to facilitate connection and service.
7. Fasten all wiring to a nearby ceiling member ensuring there are no torque forces acting on the camera.



### Important

- Read these instructions carefully before installing or operating this camera.
- This camera should be installed by a qualified service person and the installation should conform to local and national regulations.
- This camera is not suitable for installation in a ceiling void that is used as an air handling space.
- Certified as FCC Class A. In a domestic environment this camera may cause radio interference in which case the user should take adequate measures.



**DANGER: RISK OF EXPLOSION IF REPLACING A BATTERY WITH AN INCORRECT BATTERY TYPE.**

### Technical Support

For the A&E, Specification, Installation and User Manual, Software and Firmware visit:

[www.oncamgrandeye.com/resources/product-downloads/](http://www.oncamgrandeye.com/resources/product-downloads/)

Tel: UK +44 (0)20 7371 6640

US +1 978 735 4860

Email: [support@oncamgrandeye.com](mailto:support@oncamgrandeye.com)

### MAC Address

Document the camera's installation location and unique MAC address. Find the MAC address printed on the camera label. This information may be needed during the camera configuration.



## Configuring Network Settings

### Powering the Camera

Supply power to the camera with PoE IEEE802.3af through the integrated RJ45 Ethernet cable.

### IP Settings

In order to use the camera you need the IP address.

There are two IP Settings.

- DHCP server or router to automatically assign unique valid IP addresses to each camera.
- A manually configured network using static IP addresses.

If your network has a DHCP server, go to First Time Camera Access.

Should a DHCP server not be available, the camera adopts the default static IP address 192.168.0.200. You will then need to manually assign each camera with a new unique IP address.

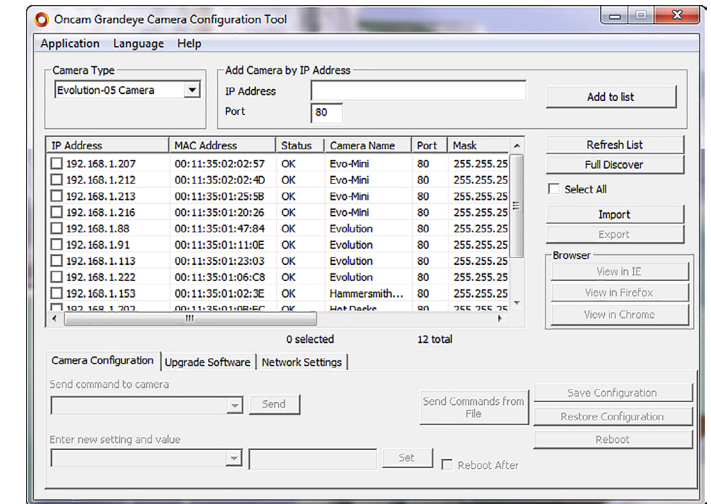
Note: See the camera's User Manual and Camera Configuration Tool User Manual for IP Setting adjustments.

## Using the Camera Configuration Tool

Go to the Oncam website (<https://www.oncamgrandeye.com/resources/camera-config-tool/>) to download the latest version of the Camera Configuration tool and corresponding User Manual.

The Camera Configuration tool quickly finds the IP and MAC addresses of all Oncam Evolution cameras connected to the network. It also allows you to change network settings, configure the system and perform software updates on multiple cameras. Initiate a new scan by clicking the Full Discover button. Start the application by clicking the CameraConfigurationTool icon found on your desktop or from the program list (under Oncam Grandeye). The software scans the network and provides a list of all connected Oncam Evolution cameras.

Note: Some functions in this tool require a username and password. If accessing the camera for the first time, an administrator username and password will need to be set



Note: The Evolution 05 screen is shown, the Evolution 12 is identical.

## First Time Camera Access

### Web Browser

1. If you know the IP address of the camera, enter this into the address bar of your web browser (Internet Explorer, Edge, Firefox or Chrome). The camera should be on the same network.
2. Create an Admin username and password.

### Notes:

Internet Explorer 11 is required to view live camera images in the browser. All other browsers can be used for configuration purposes only.

Ensure you have the latest VLC Media Player (<http://www.videolan.org/vlc/index.html>) for viewing camera images on the web interface.

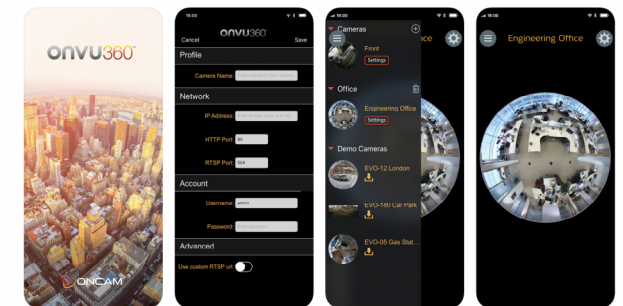
### Camera Configuration Tool

1. Select a camera from the camera list
2. Select your browser to open the web interface.
3. Click OK on the authentication pop up. You will then be prompted to create and set an Admin username and password to access the camera.



Download our FREE ONVU360 Pro mobile application and put the 360-degree experience right at your fingertips.

Scan the QR Code to get it now!



Android

iOS

