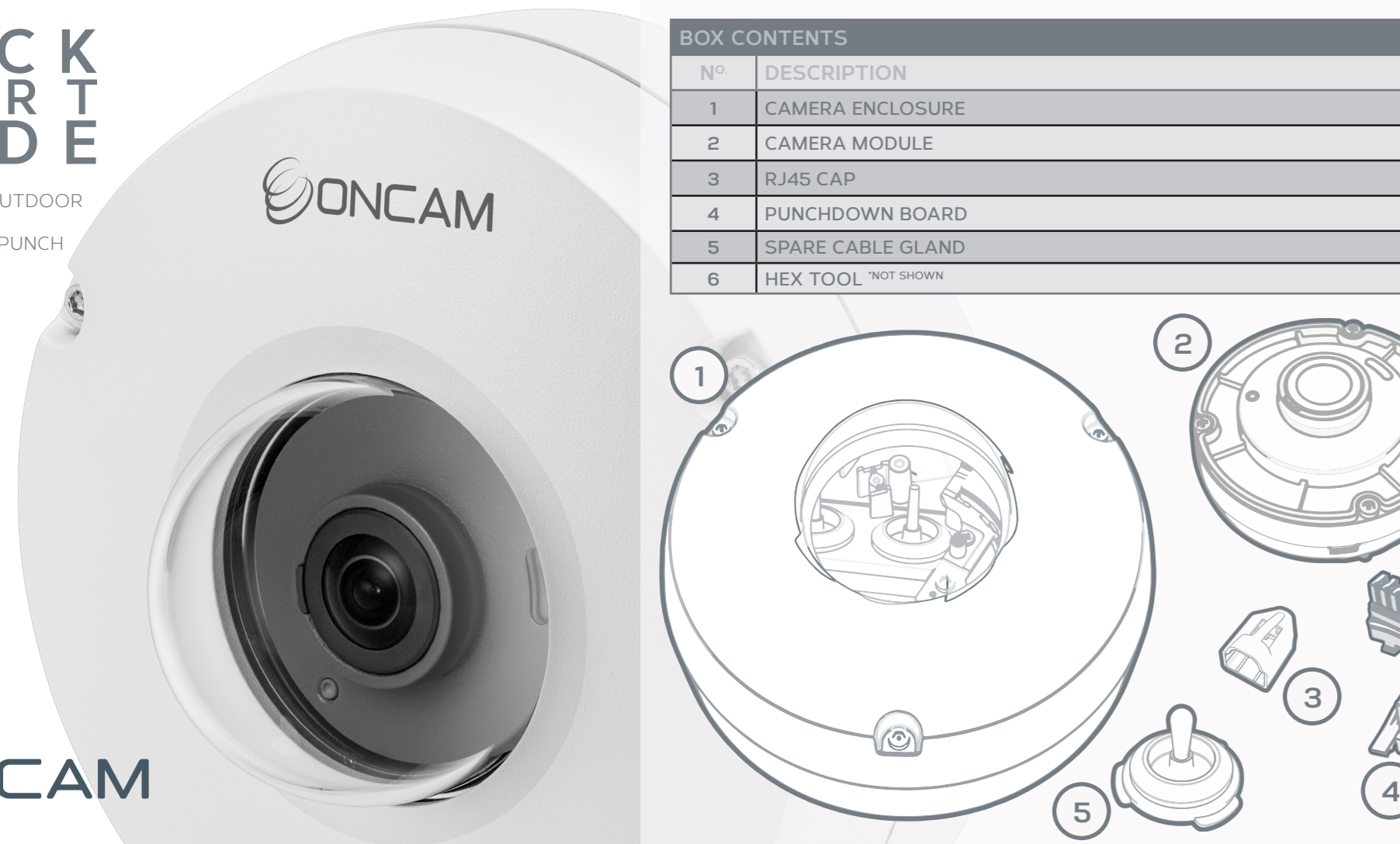
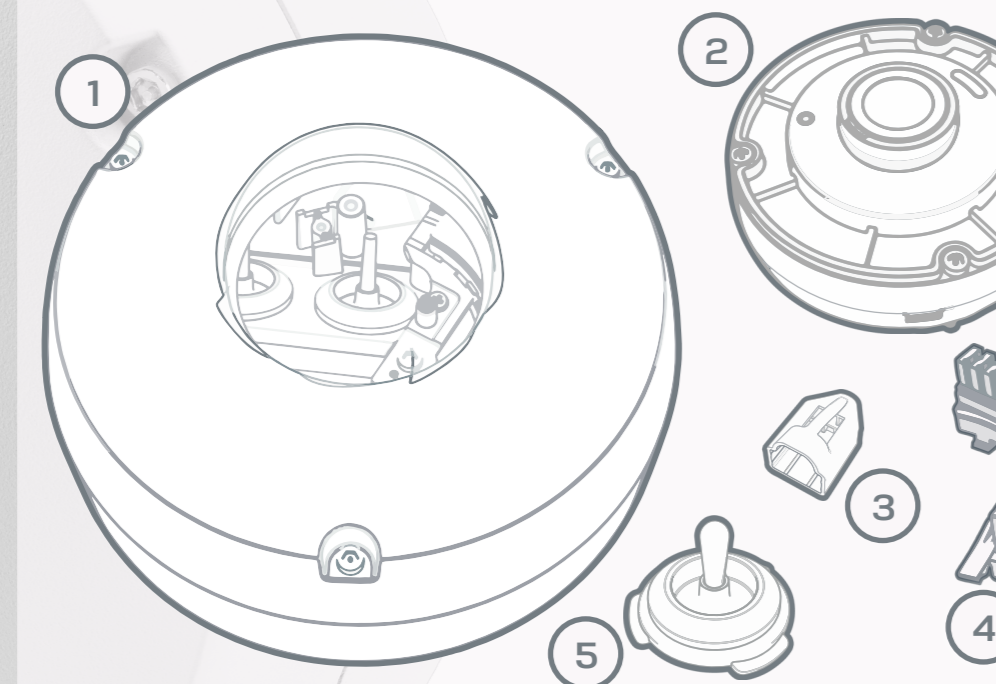


# QUICK START GUIDE

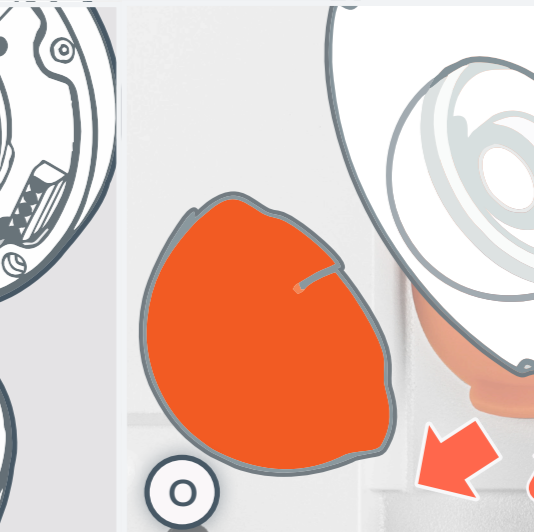
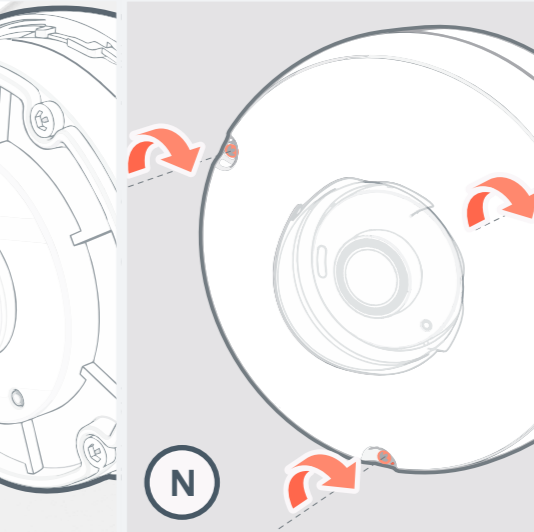
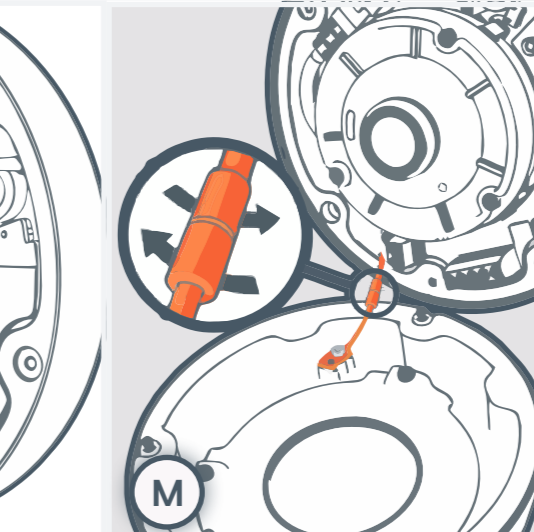
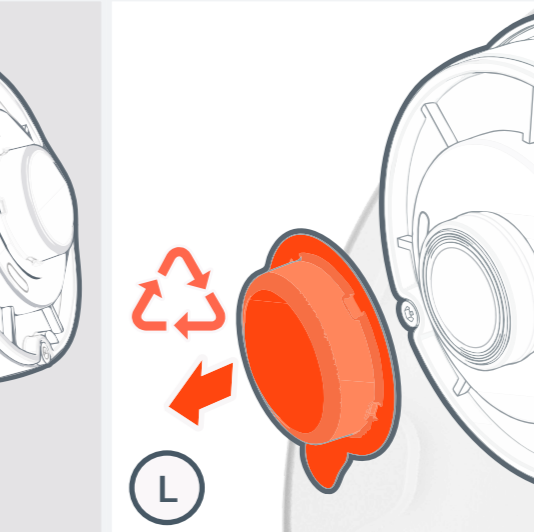
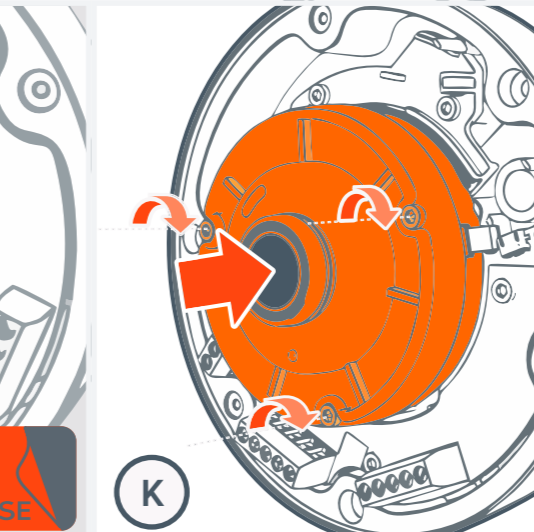
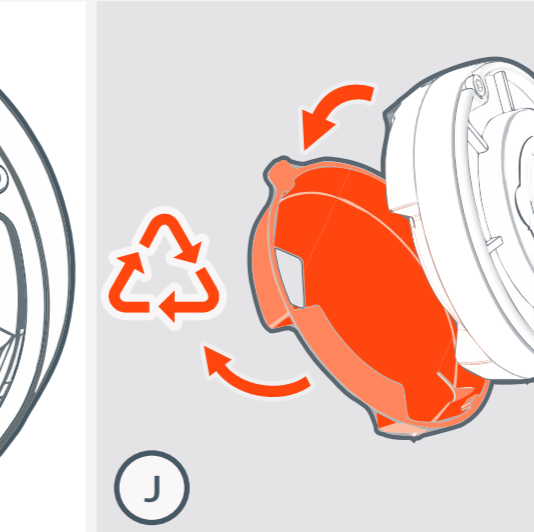
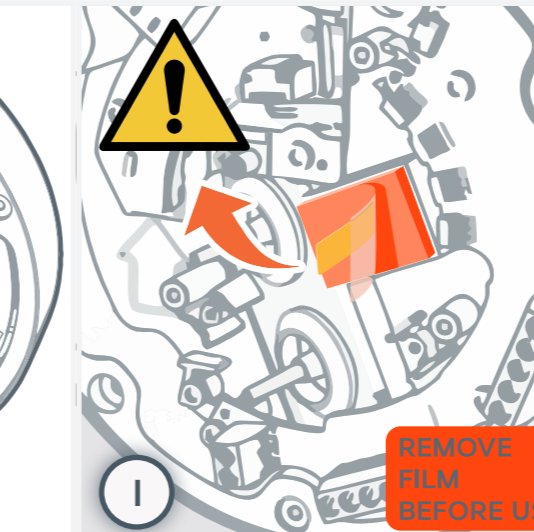
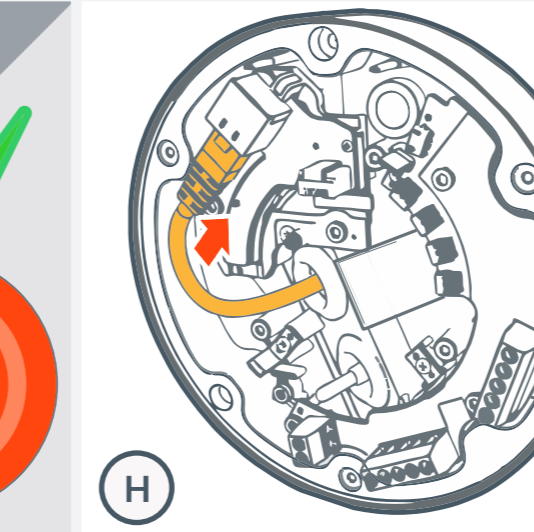
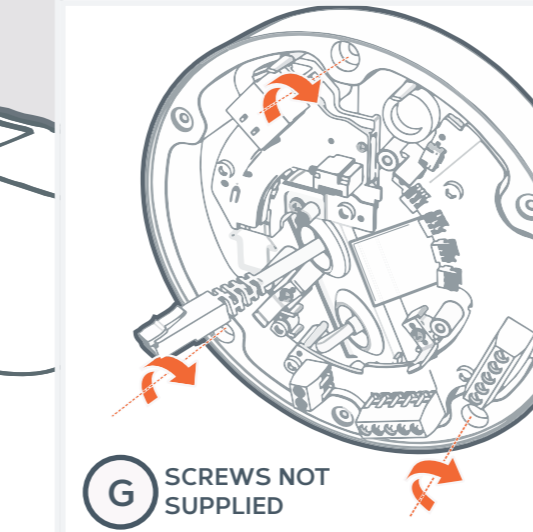
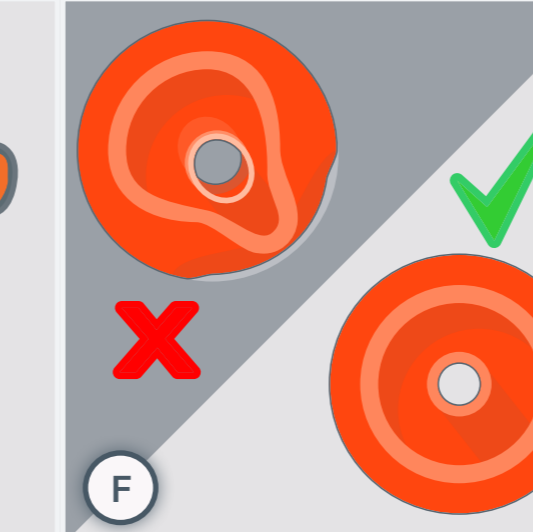
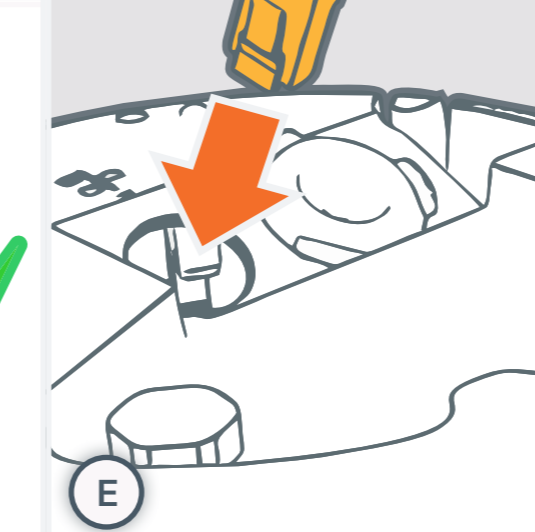
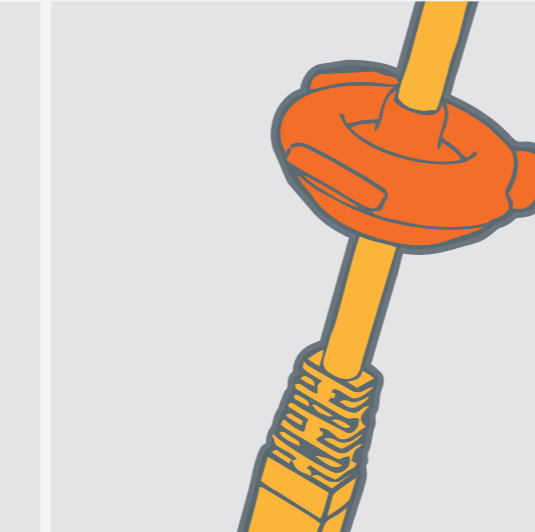
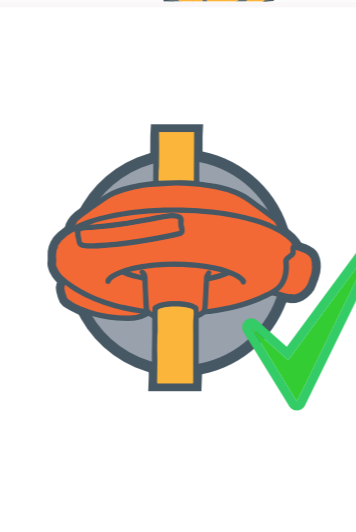
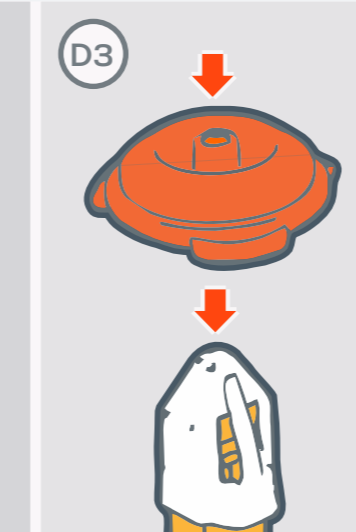
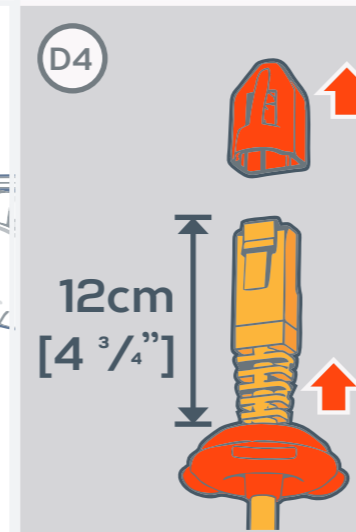
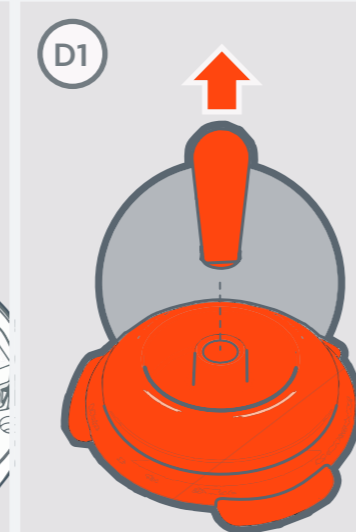
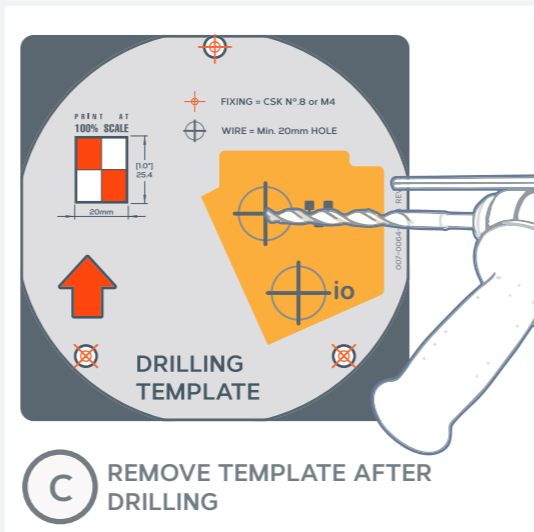
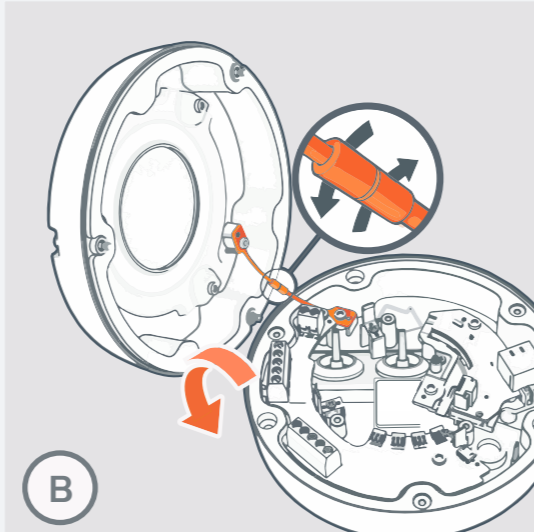
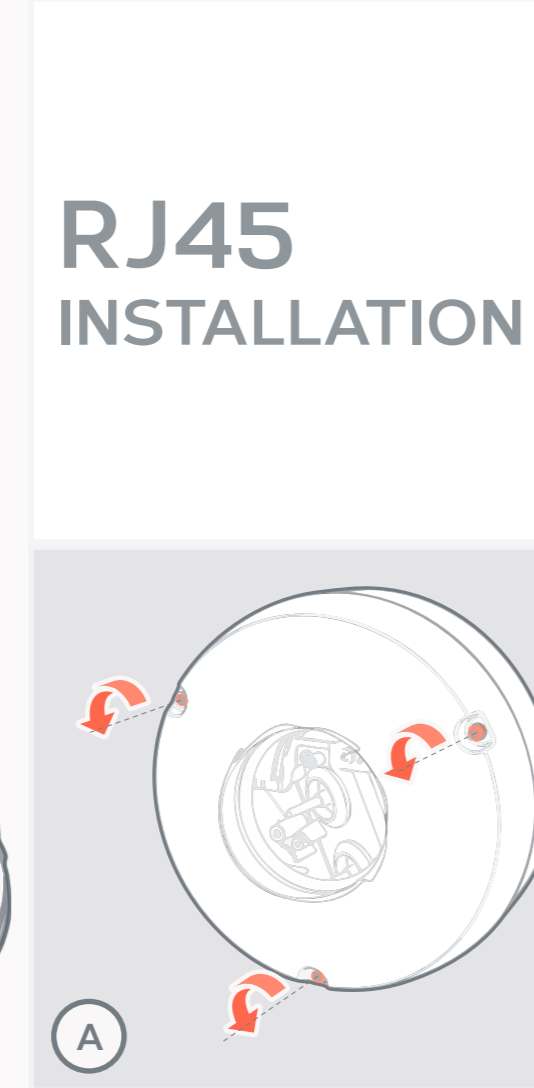
ONCAM C-SERIES OUTDOOR CAMERA RJ45 AND PUNCH DOWN OPTIONS



BOX CONTENTS	
N°	DESCRIPTION
1	CAMERA ENCLOSURE
2	CAMERA MODULE
3	RJ45 CAP
4	PUNCHDOWN BOARD
5	SPARE CABLE GLAND
6	HEX TOOL *NOT SHOWN



## RJ45 INSTALLATION



FOR MORE INFORMATION AND FIRST TIME SET UP GO TO:  
[HTTPS://WWW.ONCAMGRANDEYE.COM/C-SERIES-OUTDOOR-SETUP](https://www.oncamgrandeye.com/c-series-outdoor-setup)



© COPYRIGHT 2020 ONVU TECHNOLOGIES AG  
 ALL RIGHTS RESERVED  
 ONCAM IS A TRADING NAME OF ONVU TECHNOLOGIES AG  
 SUBJECT TO CHANGE WITHOUT NOTICE

REVISION 4.0

006-0064-0467

BOX CONTENTS	
N°	DESCRIPTION
1	CAMERA ENCLOSURE
2	CAMERA MODULE
3	RJ45 CAP
4	PUNCHDOWN BOARD
5	SPARE CABLE GLAND
6	HEX TOOL *NOT SHOWN

# PUNCH DOWN INSTALLATION

